



SUDDEN VALLEY COMMUNITY ASSOCIATION  
**SUDDEN VALLEY VIEWS**

May 2024

WWW.SUDDENVALLEY.COM

# SVCA board creates safety committee

*Will meet 4x each year to focus on educating members through events, activities, literature*

By Bill Helm  
 Editor

**SUDDEN VALLEY** — In April, the Sudden Valley Community Association’s board of directors met twice, the first time on April 11, the second time on April 25.

SVCA General Manager Jo Anne Jensen said one of the more important things the board did in April was to approve the formation of a safety committee.

The board approved the charter on April 11. The committee’s purpose, as explained in the resolution the board adopted on April 11, is to educate community members regarding various aspects of community and personal safety.

As defined in the resolution, the committee will consist of a diverse group of community members to initiate, advise, organize, recommend and propose events, activities and literature educating the

membership of safety practices of the community, within the parameters approved by the SVCA Board.

“This is important because many community members have voiced dissatisfaction with the amount of support given by the Association to safety issues,” Jensen told *The Views*.

Committee members, according to the resolution “shall be members of SVCA in good standing throughout their term and agree to follow SVCA bylaws, resolutions, policies, rules and regulations, and code of conduct.”

Although the committee may recommend prospective members to the board,

it is the board that shall appoint members to the committee.

“The committee shall be made up of a minimum of three members (two of which must be directors, with one appointed as committee chair) and not more than seven voting members. (Three of which must be non-directors), the resolution states.

The committee will meet a minimum of four times each year.

**Short-term rentals**

Also on April 11, SVCA members spoke for and against short-term rentals in the community. Jensen said that this discussion “created a lot of interest in the community and many more

members than usual attended the meeting to make comments about short-term rentals.”

Although the SVCA board did not decide either way on the matter, the board directed Jensen to put together more information and “recommend a path forward for better managing rentals in SV.”

**Action items**

Also in April, the Sudden Valley board of directors made the following decisions. Board agendas, which include request memos and other supporting documents, are available at [suddenvalley.com](http://suddenvalley.com).

• On April 11, Approved proposed in-

creases to the ACC Fines & Fees Schedule.

• On April 11, authorized General Manager Jo Anne Jensen to execute SVCA’s standard construction contract with Asphalt Northwest, LLC per their proposal dated March 29 to complete asphalt repairs to the cart paths. Contract value is estimated at \$50,455.44 with a unit price of \$5.64 per SF.

• On April 11, authorized the Turf Care Superintendent to issue a change order to Asphalt Northwest, LLC utilizing any unused design, permitting and bidding funds available with total project expenditures to not exceed \$54,080.

• On April 25, authorized Jensen to ex-

ecute SVCA’s standard construction contract with PowerTek Surveying with a not to exceed amount of \$9,500 for the purpose of completing monument preservation on Deer Run Lane.

• On April 25, approved \$240,779 in additional funding for Capital Project 9924.4 from the Roads Reserve Fund.

• On April 25, approved Granite Construction, Inc. as the contractor for the 2024 Roads and Drainage projects (9924.4 & 9922.8) and authorize the General Manager to execute SVCA’s standard construction contract with Granite Construction with a not to

See **Board** on 11

## Sudden Valley Wildfire Preparedness workshop

By Judy White  
 SVCA member

Are you concerned about the safety of your home if or when there’s a wildfire in Sudden Valley? Do you want to know how you would be notified of an emergency as well as the current plans for evacuation if needed? Are you concerned about the possibility of your homeowner fire policy being cancelled due to potential fire risk as has already happened to some Sudden Valley residents? What actions can you take to reduce your home’s risk due to wildfire?

To get answers to your questions, participate in an important event on Wednesday, May 15 at the Dance Barn, preferably in person but if not, via zoom.

These local experts will give us their evening to help Sudden Valley move forward regarding emergency preparedness, and we need to show up.

Please spread the word and encourage everyone that you know in our community to participate.

**Wednesday, May 15 from 6:30-8 p.m. at the Dance Barn**

- Whatcom Conservation District: Sudden Valley’s local Conservation District services offered.
- South Whatcom Fire Authority: Sudden Valley Fire Chief Mitch Nolze.
- Whatcom County Sheriff’s Department: emergency alert/notification system & evacuation planning & routing.

- City of Bellingham: COB’s land acquisition program.
- Department of Natural Resources: Brief introduction and how DNR fits into the partnership.
- Kulshan Carbon Trust: BioChar and possible uses in Sudden Valley.
- Whatcom CD Wildfire Resilience: Fire behavior, history, susceptibility, preparedness, & resilience.
- Question & Answer session.

A variety of free informational pamphlets will be provided.

For Zoom participation, please RSVP now. Just go to the Whatcom CD website at [whatcomcd.org](http://whatcomcd.org) and select Upcoming Events.

For more information, contact Judy White at [judy999sv@gmail.com](mailto:judy999sv@gmail.com)

## Annual Firewise program through week of May 20



**Sudden Valley maintenance has been hard at work collecting tree debris as part of the annual Firewise program. Starting the week of April 22 and ending the week of May 20, Sudden Valley maintenance travels the Association’s 50 miles of road to pick up branches and chip them on the spot. Woodchips from Firewise are available for self-loading at Area Z, which is open during normal maintenance hours: 8 a.m. until 4 p.m. Monday through Friday. (SVCA photo)**



PRST STD  
 US Postage Paid  
 Lynden, WA  
 Permit #20

\*\*\*\*\*ECRWSS\*\*

RESIDENTIAL CUSTOMER

# Sudden Valley welcomes Darren Chapman



### SVCA Administrative Team

Darren Chapman has joined Sudden Valley as the new head golf professional, replacing Kevin LeDuc who was promoted to golf director on April 1.

With more than 20 years of experience on golf courses in Australia, Asia, and the Middle East, Darren brings a unique

perspective to his work.

After moving with his wife and young daughter to Washington State late last year, Darren is excited not only to be part of the golf course, but also to be part of the community.

Please find time to stop by the Pro Shop and welcome Darren to the Pacific Northwest.

# Jo Anne Jensen announces retirement as SVCA GM

I began work at Sudden Valley on Aug. 24, 2022 as operations manager. Two months later, General Manager Dan Pike resigned, and I was offered a two-year contract as general manager. That contract ends on Oct. 31 of this year.

Although I have been encouraged by the current executive team to extend my work here at Sudden Valley, I have decided not to do that. Instead, I will return to the semi-retirement that I began in 2019 when I moved to Bellingham.

I am looking forward to tackling the personal

projects that were put on hold when I started work at Sudden Valley and to spending less time at a desk and more time outdoors.

I would like to thank everyone who supported my work here. This is a unique community and there was a lot for me to learn before I could become effective in my position.

I very much appreciate all of the members who took the time to explain some of the history of Sudden Valley, to share their perspectives, or to challenge me to find better solutions for the problems that affected the Association.

While Sudden Valley is a beautiful and special place, it is the people who choose to live here that make it unique.

The Association is made up of individuals who have chosen to live in harmony with nature, who love to get out and enjoy their beautiful surroundings, and who are actively engaged in their community.

There is still a lot of work to do between now and October. I look forward to partnering with the Board of Directors to identify Sudden Valley's next GM and ensure a smooth transition.

To do this successful-

ly, we will need the support of the community. SVCA's ability to attract and retain well-qualified staff is affected by its reputation as a contentions community.

If my decision to retire serves as an opportunity for another set of ridiculous conspiracy theories to be put forward and discussed at length on Facebook, it will have a significant negative impact on the quality of my successor.

So please, if you have questions, come into the office and talk to me.

And don't believe anything you read on social media without checking it first.

### Elemental: Reimagine Wildfire Documentary Film Screening, Thursday, June 6 6:30-8:30 p.m. at South Whatcom Library

Visit the library for an after-hours screening of this important film. After the movie, we will hear from representatives of the Whatcom Conservation District's Wildfire Preparedness team and the Whatcom Million Trees Project about ways to protect our homes in the event of an approaching wildfire. Elemental takes viewers on a journey with the top experts in the nation to better understand fire. We follow the harrowing escape from Paradise as the town ignited from wind-driven embers and burned within a few hours of the fire's start. We learn from Native Americans as they employ fire to benefit nature and increase community safety as they have for thousands of years. We follow researchers who work to understand the effects of climate on forests and the crucial role that natural forests play in storing vast amounts of carbon. Registration is required as space is limited.

# Swim lessons planned to start in July



This summer, the Whatcom Family YMCA will once again offer swim lessons at the Sudden Valley Main Pool. Classes will be

available for preschoolers and older students, including adults.

Monday and Wednesday lessons return and will be offered

in two eight-lesson sessions. Session 1 will run July 8-31, and Session 2 will run Aug. 5-28.

New this year, the YMCA will offer a Saturday session running July 6 through Aug. 24.

Registration will be through the YMCA, but details are not yet available. SVCA will update the community on how to register as soon as information is available.

Lesson schedule is as follows:

### Pre-school

Level A&B: 9:30-10 a.m.  
Level 1: 10-10:30 a.m.  
Level 2: 10-10:30 a.m.  
Level 3: 11-11:30 a.m.  
Safety Around Water: 11:30 a.m.-noon

### Youth to adult

Level 1-2: 9:30-10 a.m.  
Level 2: 9:30-10 a.m.  
Level 3-4: 10-10:30 a.m.  
Level 4: 10-10:30 a.m.  
Level 5/6: 10:30-11 a.m.  
Teen/Adult: 11-11:30 a.m.  
Safety Around Water: 11:30 a.m.-noon

## RENT A PAVILION FOR YOUR NEXT PARTY OR EVENT

Enjoy exclusive use of a fireplace, picnic tables, with nearby restrooms and beach access.



The Marina Beach Park shelter is close to the off leash park where your dog can roam free



Swim in Lake Whatcom at AM/PM beach, hike the trails



For reservation, email office@suddenvalley.com. See all facilities available to rent at suddenvalley.com.



### CLEANING WITH CARE BY MICHELE

Residential, Commercial, Apartments

Michele Hurley

360-306-7078 • Cleaningwithcarebymichele@gmail.com

Licensed, Bonded & Insured

PRESENTED BY Sommer Nyte, REALTOR®



12 SPINNAKER LANE  
3 BED • 2.5 BATH • 2,890 SQ FT  
OFFERED AT \$1,500,000



22 MARIGOLD DRIVE #19  
2 BED • 2 BATH • 1,368 SQ FT  
OFFERED AT \$385,000



3 STABLE LANE  
3 BED • 1 BATH • 1,040 SQ FT  
OFFERED AT \$435,000



2683 LOCHCARRON DRIVE, FERNDALE  
4 BED • 2.25 BATH • 2,213 SQ FT  
OFFERED AT \$665,000

### BUYING OR SELLING A HOME?

Let Me be Your Guide!

Buying or selling a home can be a stressful process if you don't have the right real estate agent. You can rely on me to get you the best possible result. No one works harder for you!

RE/MAX WHATCOM COUNTY  
1937 Lake Whatcom Boulevard  
Bellingham, WA 98229



THE BEST Bellingham HOMES TEAM

Contact Me:

SOMMER NYTE, REALTOR®  
SOMMERNYTE@REMAX.NET  
360-305-3248  
BESTBELLINGHAMHOMES.COM



**AROUND THE VALLEY**

# Bright sun, cool rain pepper Sudden Valley in April



**By Jo Anne Jensen**  
SVCA General Manager

In April, Sudden Valley experienced the traditional spring mix of bright sun and cool rain.

Staff are fully focused on outdoor maintenance, finalizing summer programs, and organizing summer events.

**Administration**

Activity Summary

- Held SVCA volunteer event to clean up the Lake Louise trail.
- Began organizing 2024 Valley Fair.
- Supported meetings for Architectural Control, Finance, Nominations & Elections, and Document Review Committees
- Actively working with Marina patrons to renew 2024 rental agreements

Successes

- Strong response from food and craft vendors to announcement of the 2024 Valley Fair date.

Planned Work

- Continue work on Marina rental renewals.
- Finalize programs and hiring for 2024 pool season.
- Next volunteer cleanup event will be held May 17.

**Accounting**

Activity Summary

- Completed routine work to maintain monthly financial schedule; February financials completed.
- Began preparation for the 2023 Financial Audit.
- Began updates to 2026 Reserve Study.
- Kicked off internal budgeting process with department managers.

Successes

- Getting an early start on the annual Reserve Study updates.

Planned Work

- Close out 2023 capital projects. Continue work on 2023 Financial Audit.
- Continue work on annual Reserve Study.

**Maintenance**

Activity Summary

- Installed wood chip boxes on OP-20 & OP-21.
- Completed Firewise preparation and began neighborhood pickups.
- Conducted mowing operations in SVCA Parks and Rec areas.
- Removing a picnic table from the lake at the Marina.
- Replaced light fixture at the community center.
- Installed new tiles at the main pool.
- Removed graffiti from several street signs.
- Graded the marina gravel area.
- Installed a roadside mower on a tractor.
- Repaired broken trim on SP-5.

Successes

- A flatbed was installed on the chassis of the new maintenance truck, and the truck is onsite.
- Rekey project is underway.

Planned Work

- Firewise - continue neighborhood pickups and chipping of debris
- Remove pool covers and start preparing pools for Spring opening.
- Repair slide at Huckleberry Park (parts on order).
- Clean Clubhouse parking area.
- Clean Welcome Center deck and furniture.
- Routine mowing of parks and gate entrances.
- Road shoulder mowing.

**Recreation**

Activity Summary

- Interviewed lifeguard applicants.
- Confirmed agreement with YMCA for Swimming Classes.
- The first floor storage room has been cleaned out & reorganized.
- The Chief of Staff & Assistant Manager of Parks & Recreation attended the Whatcom Pool & Spa Operator Conference sponsored by Whatcom County Health Department.
- Served 300 people at the CTK Sunday Easter Egg hunt. Handed out free hot chocolate, coffee and apple cider.
- Completed an inventory of all pool furniture & lifeguard equipment.

Successes

- Planning for the 2024 Pool Season is going well.

Planned Work

- Hiring 2024 Lifeguards and Front Desk staff.

**Golf**

Activity Summary

- Prepared for Masters Par 3 Tournament with 72 players participating.
- Conducted interviews and issued offer letters for seasonal staff

recruitment.

- Moved and set up a new office space.
- Sent out a newsletter to membership, highlighting upcoming season details and introducing new head professional, Darren Chapman.
- Coordinated with Turfcare Superintendent to address course-related issues and updates.
- Successfully organized Members Opening Day event, with 64 players participating.

Successes

- Great Opening Day event.

Planned Work

- Prepare for the Men's and Ladies Opening Day events.
- Begin onsite training with new Head Pro Darren Chapman May 1.
- Continue to train staff as we approach the busier season.

**Turf Care**

Activity Summary

- Continued turfcare equipment repair and maintenance as per schedule.
- Conducted aerating on troubled greens and overseeding/fertilizing.
- Addressed a 4-inch irrigation mainline valve break and repaired it.
- Installed sod on forward "Gold

Tee" boxes.

- Coordinated with Golf Director to update on course conditions and discuss long-term strategies, especially with temporary greens in play.
- Overseeded closed putting greens (9-12-13-14-15), now showing germination and gradual growth.
- Fully charged the irrigation system and the library community garden watering system for the season.
- Commissioned an arborist report for a hazard tree at #13 and initiated the process for a tree removal permit.

Successes

- Feeling optimistic about the germination showing on closed greens.

Planned Work

- Turf equipment seasonal repair and maintenance ongoing.
- Work on Clubhouse landscaping is well under way with new plant material installed.
- Mowing all areas of the golf course on a steady schedule well underway now.
- Continue with mulch work at clubhouse landscape areas as time and labor permits.

• MAINTENANCE • PAINTING • INSTALLATION •

REPAIRS • PLUMBING

CARPENTRY • TILING

**HONEST SOLUTIONS**

Your Local Sudden Valley Handyman

---

**Ramsell Home Services LLC**  
**Charles Ramsell**

Phone: +01 206.234.8610 Email: ramsellhomeservices@gmail.com

• DRYWALL • HOME AUTOMATION • MORE... •



**ROADSIDE PICKUP WILL TAKE PLACE AT EACH GATE STARTING ON THE FOLLOWING MONDAYS**

**Gate 9 & 13/ May 6**

**Gate 1/ May 13**

**Gate 2/ May 20**

**(Gate 5 & 3's pick-up dates occurred in April)**

*Residents can take advantage of this annual program by having their tree branches placed in an accessible pile next to the roadway prior to the scheduled pickup time for their area. Piles of branches placed by the roadside after the scheduled pickup time will not be picked up and will be the property owners' responsibility.*

**FIREWISE TIPS:**

- Service is limited to residents; no commercial support is available.
- Pickup is limited to tree branches that have **naturally** broken from a tree. Services do not include limbs that are cut from an established tree.
- The maximum diameter of the limb is six inches.
- There is no limit to the length of the limb, and crews prefer longer lengths.
- The height of a pile of limbs should be no more than five feet tall.
- **Vegetation such as brush, lawn waste, tree roots, bagged leaves, etc. will not be picked up as these items will jam/plug equipment.**

# VIEWS

## SUBMISSIONS

SV Views  
P.O. Box 153  
Lynden, WA 98264  
Fax to: (360) 354-4445  
Email: bill@lyndentribune.com

## POLICY

The Sudden Valley Views welcomes letters to the editor submitted by members of the Association. Topical submissions of current news interest may be accepted up to six times per calendar year. Letters of up to 550 words are allowed. The editor may edit for style and libel.

## DEADLINES

The deadline for editorial submissions (including letters to the editor) for the upcoming issue is the 23rd of each month. Editorial items may be submitted to: bill@lyndentribune.com. For advertising information and deadlines, please contact Mitze Kester at mitze@lyndentribune.com or call 360.354.4444.

## Whatcom Million Trees project to hold free movie night, May 17

*Double-feature movie night starts at 5:30 p.m.*

By SVCA Staff

On May 17 at 5:30 p.m. at the Dance Barn, local non-profit Whatcom Million Trees Project (WMTP, WhatcomMillionTrees.org), in collaboration with Sudden Valley Community Associa-

tion, will host a fun FREE double-feature movie night.

The films that will be shown are Intelligent Trees (TV-G) and Love Thy Nature (Not rated).

The films will be followed by a brief Q&A with WMTP Executive Director Michael Feerer.

Come enjoy free popcorn and beverages and be wowed by amazing images of the workings of our planet and forests.

You'll feel more connected to nature and learn how WMTP is working to protect the beautiful

trees you know and love in Sudden Valley RSVP at bit.ly/RSVP-2-Moo-V-Nite to receive reminders/updates.

Please bring your own camp chairs, beach chairs, mats, cushions, and blankets to get comfy on the dance floor.

Whatcom Million Trees Project's mission is to plant & protect more than one-million trees within Whatcom County -- while connecting individuals, businesses & policymakers to the immense value of trees & forests.

## LETTERS

### Looking forward to water lily cleanup

Editor,

First, thanks to the SVCA Board and Administration for doing so much to improve residential life in our Sudden Valley community this past winter.

To name two areas: drainage and snow ploughing were done with great professionalism.

Second, a follow-up regarding Lake Louise's invasive, non-native water-lilies.

On April 6, it was clear that Lake Whatcom's non-native lilies are just about to re-surface, and again become an unhealthy feature of the lake.

Last year, lily-pad growth took over the condominium bay by Marigold Drive and a continuous stretch along the eastern side of the lake.

By high summer, the lily-pads had covered the wild bird preserve at the opposite end.

This section of the lake became inaccessible to water birds. The only water lily cleanup undertaken last year was in front of the Welcome Center.

In the section on upcoming projects in April's edition of the Sudden Valley Views, no mention was made of any planned lily removal from Lake Louise.

It would be very welcome news to the many walkers, for whom Lake Louise offers the most popular trail, to hear of a plan by our Board and Administration to significantly reduce the lilies this year.

Michael Preston  
Sudden Valley

### Keeping Sudden Valley safe and welcoming

Editor,

Sudden Valley made me cry. What I mean to say is ... I cried the last time I had to leave.

Due to our life circumstances (shared child custody, careers, etc.), my spouse and I are unable to live there with you full time.

I dream of the day that I can live year-round among the trees, take a run around Lake Louise, and enjoy a cool summertime swim in Lake Whatcom.

I soak it all in with such gratitude.

Buying a retirement home in your beautiful, captivating community is the realization of my American dream.

Being able to share our home with guests as a short-term rental is helping us get closer to becoming full-time residents.

I am not a large corporation or property management company

trying to make a quick buck. I am your neighbor and friend.

I've purchased art from Sudden Valley artists, which is proudly displayed in our home right alongside the sketch of our house that a friend lovingly made for me the day we got the keys to our modest dream home.

My aging father has enjoyed a round of golf with our next-door neighbor. I cook dinner for that same neighbor whenever I am home.

I've baked my famous mango muffins for my neighbor across the street. It's the least I can do. They help keep an eye on my house when I'm not there, ready to report any concerning behavior they may see.

Thankfully, there have been no incidents or complaints, but that's not surprising.

We vet our guests carefully and monitor behavior on the door camera.

The last thing we want is unruly people in the home we love, disturbances on our block or any harm to come to our community.

That's why I was surprised to see the article in April's publication about whether short term rentals (STR) violate the Sudden Valley Bylaws and witnessed the conversation about the same at the April 11 meeting of the Board of Directors.

What I heard at the meeting

See **Keeping** on 8

## SVCA places 'high value on preservation of healthy native trees and natural features'

By Architectural Control Committee (ACC)

To ensure that the beauty of Sudden Valley would be preserved, the Sudden Valley founders put in place Architectural Control Policies (AC policies). As stated in the AC policies, Sudden Valley as a community "places a high value on preservation of healthy native trees and natural features" and they refer to the "overall concept of Sudden Valley, which includes protection of the natural forested beauty of the area ..."

The AC policies outline the criteria for tree and vegetation removal in depth, as well as common practices, and policies. Following are a few highlights.

Regular maintenance of trees and vegetation is allowed without review by the Architectural Control Committee (ACC). This includes removal of branches that are six inches or less in diameter as long as removal does not exceed 30% of the foliage density per tree. Additionally, trees 10 inches or less in diameter and vegetation growing within 10 feet of a residence may be removed without ACC approval. More details are available in AC Policies section 14.10.

Homeowners must submit a Tree/Vegetation Trimming and/or Removal Request (tree request) in the following situations:

### Homeowner property

If a tree of concern is larger than 10 inches in diameter and within 10 feet of the residence, a request should be submitted.

If a tree or substantial vegetation is more than 10 feet from the residence, a request should be submitted.

Regarding tree work, it is the homeowner's responsibility to contact Whatcom County to determine if a Whatcom County

permit is needed.

A Sudden Valley Tree Removal/Limbing Permit will be issued once a request is approved and must be posted at the residence while work is being done.

### Neighbor property

If a tree of concern is on a neighbor's property, a request should be submitted with written permission from the owner. Permission is required before submitting the request.

### Sudden Valley (SVCA) property

If a tree of concern is on SVCA property, a request should be submitted. The request is then forwarded to the tree team for evaluation and handling.

An arborist may be consulted, and, if the tree poses an imminent danger, the tree is prioritized for quick removal. If removal of the tree is not urgent, it is placed on a list for possible removal in the future.

Due to the number of tree requests received, do not expect an immediate response regarding the status. If more than two weeks has passed, requestors are welcome to inquire about the status of their request.

### Hazard Trees

If a tree of concern poses a hazard which is confirmed by an arborist's report, submit a request and indicate URGENT. The General Manager "has the authority to approve the removal of dead or hazardous trees and landscape plants..." (SVCA policy 2006.03 #3) without ACC approval.

### Aesthetic, functional

Trees are both aesthetic and functional components of Sudden Valley's landscape. Trees have a significant ability to reduce erosion and to manage the

See **Preservation** on 7



SUDDEN VALLEY VIEWS  
Sudden Valley Community Association  
4 Clubhouse Circle, Bellingham, WA 98229  
www.suddenvalley.com

Administration Offices / Member Services are in the Welcome Center, just inside the Gate 2 entrance

Hours: 8 a.m. - 4:30 p.m. for remote assistance (phone or email)  
9 a.m. - 4 p.m. for in-person assistance, Monday through Friday

Administration Offices/ Member Services: 360-734-6430

General Manager: JoAnne Jensen, jjensen@suddenvalley.com, Ext. 321

Accounting Manager: Joel Heverling, CPA, acctmgr@suddenvalley.com, Ext. 212

Accounts Receivable: Gil Martinez, ar@suddenvalley.com, Ext. 214

Accounts Payable: Davey Higashi, ap@suddenvalley.com, Ext. 215

Collections Specialist: Angie Huggins, acctclerk@suddenvalley.com, Ext. 243

Recreation Center Front Desk: 360-366-8450

Director of Golf: Kevin LeDuc, kleduc@suddenvalley.com, Ext. 331

## BOARD OF DIRECTORS

President: Keith McLean; Vice President: Taimi Van De Polder; Secretary: Linda Bradley; Treasurer: Laurie Robinson; Members: Rick Asai, Stu Mitchell, Ray Meador, Andrew Tischleder and Sonia Voldt.  
ACC Chair: Daniel Rodriguez; N&E Chair: Rob Gibbs

**SUDDEN VALLEY VIEWS** is the official publication of the Sudden Valley Community Association. Published monthly, it has a circulation of 4,074.

Publisher: Sudden Valley Community Association

Executive Editor: Lynden Tribune and Print Company

Layout and design: Bill Helm, 360-354-4444; bill@lyndentribune.com

Reporter: TBD, 360-354-4444, ext. 23; email@lyndentribune.com

Advertising Manager: Mitze Kester 360-354-4444; mitze@lyndentribune.com

The Views is published monthly for a subscription price of \$24 per year by the Sudden Valley Community Association.

POSTMASTER: Please send address changes (Form No. 3579) to Sudden Valley Community Association, 4 Clubhouse Circle, Bellingham, WA 98229.

The acceptance of an ad in the Views does not constitute approval of the Sudden Valley Community Association. Comments expressed in the Views are not necessarily the opinions of the SVCA, its officers or Board of Directors, but are solely those of the writers. No non-advertising portion of the Views is subject to pre-publication review by anyone but the editor.

# Tiny Boats set sail in Sudden Valley

By Maxx Robinson  
SVCA Staff

Residents know that spring has arrived when boats, kayaks, and paddle boards begin to dot the surface of Lake Whatcom.

Looking closer to the shore, however, may reveal an unexpected kind of vessel.

On a cool, windy day, several sailors maneuver tiny, radio-controlled sailboats that dart around scattered buoys as they race toward the finish line.

One of those sailors is Will Lesh, founder, designer, and owner of Tippecanoe Boats. Based in Whatcom County, Tippecanoe Boats produces popular free-sailing and radio-controlled model sailboat kits.

"I've been making boats with Tippecanoe Boats for 42 years now, and we have close to 90,000 boats sailing all over the world," said Lesh.

An experienced sailor, Lesh has built his own 24-foot sailboat and sailed across the Atlantic Ocean in 1981.

Two years later, Lesh founded Tippecanoe Boats, beginning by building free-sailing model boats.

The RC sailboats came later, and a radio controller allows sailors to pull the sails in or out and steer the rudder, just like their larger counterparts.

Because Tippecanoe's RC model sailboats sail the same as full-size sailboats, "adults that haven't sailed before find that with the model boats, it's easy to learn how to sail because you can see what's happening," said Lesh.

"It's good training for big boat sailors, because getting your head out of the boat is a key concept — to be aware of the rest of the fleet."

Tippecanoe's RC boats are popular for racing, and "the one that's most popular to race is the T37," said Mark Smith, Bellingham's fleet captain. "Here in the Bellingham area, there are about 30 people that have T37s, so my job is to organize regattas. And that means, in essence, contacting them and setting out the marks — the racecourse — for them to come and sail together."

The regattas for model sailboats are timed races where sailors must round several buoys on their way to the finish line. "There's a starting line and there is generally an upwind mark,"



said Smith. "So, you're sailing upwind to the marks, tacking back and forth, and you come back down. Maybe there are some other marks, but you have a starting line, upwind leg, downwind leg, and sometimes you do that twice."

On May 11 from 10 a.m. to 4 p.m. at Sudden Valley Marina, a regional race organized by the Pacific Northwest Small Yacht Club of Seattle will be held. "There will be people coming up from Seattle and from a very active group over on the Olympic Peninsula at Port Ludlow," said Smith. "We'll be hosting them for the first time here at Sudden Valley, and we're so excited. If people just want to come watch, they can come watch."

In addition to the regional race, Smith's fleet regularly meets



at the Sudden Valley Marina. "People are welcome to come out and try it out," said Smith. "Come down to the marina on the first or third Wednesday of the month between one and three [in the afternoon], and we always have an extra boat. We'd be happy to have them."

Contact Mark Smith for more information at mgsmith4430@gmail.com.

The Dragon Flight 95 fleet, organized by Mike Reed, also meets at the Sudden Valley Marina on Tuesdays from 9:30 a.m. until noon.

**From 10-4 on May 11 at Sudden Valley Marina will be a regional race organized by the Pacific Northwest Small Yacht Club.** (SVCA photo)

## AA Right- Steve Kure

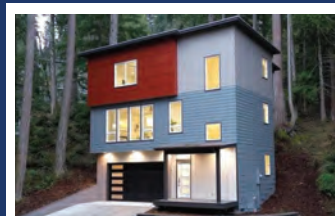
- |   |   |
|---|---|
|  <b>Lock Service</b> |  <b>Tree Service</b> |
| • Lock-Outs: Home/Auto/Mailbox  | • Take Down & Limbing   |
| • Mailbox Locks Replaced  |   |
| • Car Transponder Keys Copied   | <b>(360) 733-0648</b>   |

Serving Sudden Valley for 38 years. Cont. # AARIG\*\*066BD

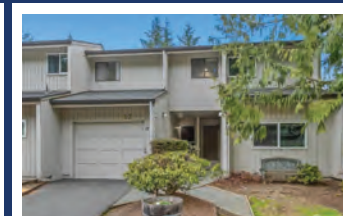
## UNMATCHED EXPERIENCE. UNMATCHED RESULTS.



1 LAKE LOUISE DR #35  
\$349,900 • 1,120 SQFT



28 HILLSIDE PLACE  
\$639,900 • 2,174 SQFT



1 LAKE LOUISE DR #17  
\$379,900 • 1,294 SQFT



12 GREEN HILL RD  
\$850,000 • 2,572 SQFT



12 SUNFLOWER CIR  
\$1,095,000 • 3,077 SQFT



12 SPINNAKER LANE  
\$1,500,000 • 2,890 SQFT



15 COLD SPRING LN  
\$510,000 • 1,428 SQFT



62 VALLEY CREST WAY  
\$500,000 • 1,908 SQFT



10 SHETLAND COURT  
\$567,000 • 1,633 SQFT




**Thinking About a Reverse Mortgage Loan?**

- **No mandatory monthly payments** to age 150\*
- Supplement **cash flow**
- **Refinance** your debt
- Pay for **in-home health care**
- Home **renovations/improvements**
- **Preserve retirement assets** \*\*
- Increase **available cash reserves**
- **Preserve equity and retain title**
- **Purchase** a more appropriate home

**Mike Mitchell**  
CMPS, CRMP  
NMLS 1179477

Call Now  
**360-685-6850**

Or scan



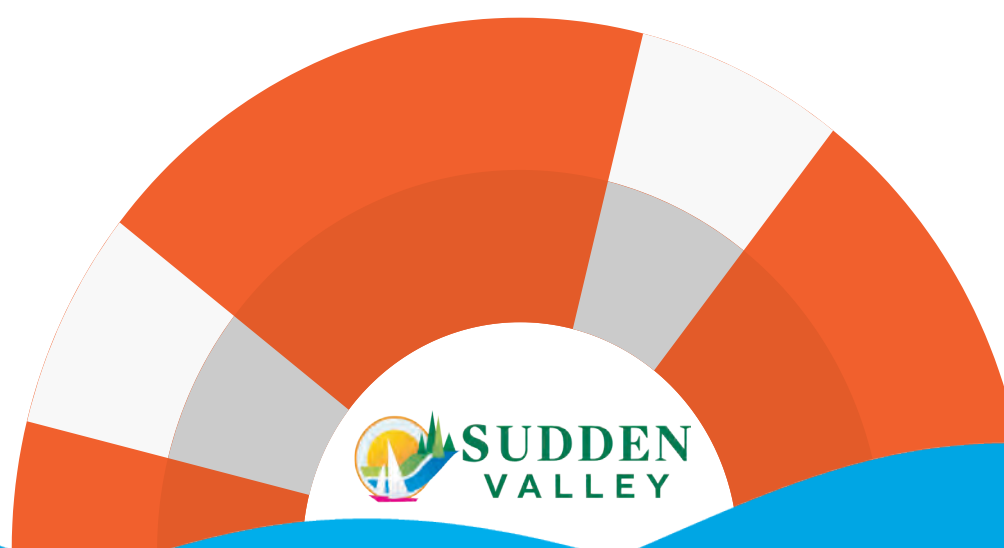
\*Borrower must live in the home, maintain it, and pay property-related charges, like taxes and insurance (and HOA fees, if applicable).  
\*\*This advertisement does not constitute financial advice. Please consult a financial advisor regarding your specific

Copyright©2024 Fairway Independent Mortgage Corporation ("Fairway") NMLS#2289. 4750 S. Biltmore Lane, Madison, WI 53718, 1-866-912-4800. All rights reserved. Fairway is not affiliated with any government agencies. These materials are not from HUD or FHA and were not approved by HUD or a government agency. Reverse mortgage borrowers are required to attend counseling sessions with a HUD-approved agency. The youngest borrower must be at least 62 years old. Monthly reverse mortgage advances may affect eligibility for some other programs. This is not an offer to enter into an agreement. Not all customers will qualify. Information, rates and programs are subject to change without notice. All products are subject to credit and property approval. Other restrictions and limitations may apply.

# Join the next community cleanup



Sudden Valley volunteers, alongside Maintenance and Administration staff, undertake a cleanup around Lake Louise. Together, they removed more than four truckloads of trash and invasive brambles from this popular trail. Join the next Community Cleanup from noon-2 p.m. Friday, May 17. Activities planned: Litter pickup at Gate One mailbox area; brush removal at Marina parking lot. How you can help: Sign up to get notified of Sudden Valley Volunteer events at [SuddenValley.com](http://SuddenValley.com). (Morgan Libby/Sudden Valley Views)



## Lifeguards Wanted!

Dive into a rewarding job - join the SVCA team as a lifeguard and make waves of safety at our pool!

- Must be at least 16 years old.
- \$16.50 - \$17.50/hr.
- Morning, afternoon, & evening shifts.
- Lifeguard Certification Training available.
- Looks great on college applications!

Apply online at [suddenvalley.com](http://suddenvalley.com)

## WE CLEAN DRAIN DRY



Protect our recreation and drinking water from **aquatic invasive species**.

Get your permit today!



[WhatcomBoatInspections.com](http://WhatcomBoatInspections.com)



**FINANCIALS**

Sudden Valley Community Association

**Sudden Valley Community Association  
Reserve Cash Balance & Activity  
2 Months Actual, 10 Months Projected**

UNAUDITED

**Capital Reserve Funds**

**Operating Reserve Funds**

	Capital Reserve Funds						Operating Reserve Funds			
	CRRRF	Roads	CRRRF Capital Reserve Holding Cash	Board Density Reduction	Mailbox	Mitigation Assignment of Savings*	Total Capital Reserve Funds	Emergency Ops	UDR	Total Operating Reserve Funds
<b>Net Available Cash 12/31/2023</b>	3,624,027	2,039,620	222,019	87,688	126,445	151,528	\$ 6,251,327	362,252	306,265	\$ 668,517
Dues Received	221,264	229,436	-	-	4,131	-	454,831	-	26,228	26,228
Storm Water Mitigation Plan Fee	-	-	-	-	-	-	-	-	-	-
Investment Income	4,568	2,729	164	36	92	22	7,612	268	230	498
Sale of Assets	-	-	-	-	-	-	-	-	-	-
Board Approved Transfers	105,600	-	-	-	-	-	105,600	-	-	-
Mitigation Release	-	86,923	-	-	-	(86,923)	-	-	-	-
2024 Expenditures	(151,866)	(30,438)	(1,400)	-	-	-	(183,705)	-	(697)	(697)
<b>Net Available Cash at 2/29/2024</b>	3,803,593	2,328,270	220,783	87,724	130,668	64,627	\$ 6,635,665	362,520	332,026	\$ 694,546
<b>10 Month Outlook</b>										
Outlook - 2024 Dues (95% collections)	1,070,347	1,100,886	-	-	19,865	-	\$ 2,191,098	-	-	\$ -
Outlook - Prior Year Collections	16,579	17,052	-	-	308	-	33,939	-	32,727	32,727
CRRRF Loan Payments for year 2024	(277,533)	-	-	-	-	-	(277,533)	-	-	-
Obligated Expenses/Holdings	(1,826,740)	(1,336,515)	(220,783)	-	-	(64,627)	(3,448,665)	-	(15,068)	(15,068)
<b>Net Usable Cash Balance 12/31/2024</b>	2,786,247	2,109,693	-	87,724	150,841	-	\$ 5,134,505	362,520	349,685	\$ 712,205
Board Recommended Carryover Balance	(600,000)	(500,000)	-	-	-	-	\$ (1,100,000)	-	-	\$ -
<b>Net Usable Cash 12/31/2024, After Recommendation</b>	\$ 2,186,247	\$ 1,609,693	\$ -	\$ 87,724	\$ 150,841	\$ -	\$ 4,034,505	\$ 362,520	\$ 349,685	\$ 712,205
<b>Net Current Year Cash Increase (Decrease)</b>	(837,780)	70,073	(222,019)	36	24,396	(151,528)	\$ (1,116,822)	268	43,420	\$ 43,688

\*Note, when mitigation period has ended, unspent funds will be returned to the source account, Roads and CRRRF.

# Preservation: Of healthy native trees and natural features'

**Pro Tips for submitting a Tree/Vegetation Trimming and/or Removal Request:**

- Review the Architectural Control Policies, particularly section 14.10. The policies are available on the SVCA website under the Resident Resources tab, below the Governing Documents section, under the Board Resolutions, Rules & Regulations section.
- Fill in all the blanks. (ACC Administration can look up the Division and Lot, if needed.)
- Check the appropriate boxes for Number of Trees to be Removed or Limbed, Type of Tree, Reason for removal, Replanting plan, Location.
- In the empty square box, detail a site plan showing the road, the house, and the location of the tree(s)/vegetation. (A simple drawing is fine.)
- In the description section, expand on the reason for the request and any additional information you would like the ACC to consider.
- Include photos or illustrations, as applicable.
- Email the completed request to [accadmin@suddenvalley.com](mailto:accadmin@suddenvalley.com) or bring it to the Welcome Center. After hours, drop the request into the outside payment drop box.
- Place ribbon around the tree/vegetation. (Ribbon is available at the Welcome Center.)

Continued from 4

absorption of water. Due to the importance of trees in the SVCA community, fines for not following the guidelines are steep.

Some examples are: \$5,000 per tree for cutting trees greater than eight inches in diameter without prior ACC approval, \$10,000 per tree for cutting/limbing trees after a request for such has been denied by the ACC, \$5,000 per tree for topping, windowing, or excessive limbing on trees. Fines are doubled for subsequent violations.

The ACC usually meets on the first Thursday and the third Thursday of each month. Applicable forms are available on the SVCA website, [suddenvalley.com](http://suddenvalley.com), under the Commonly Requested Forms tab in the Architectural Control section.

Printed forms are available at the Welcome Center located at 1850 Lake Whatcom Blvd. (the first right after entering Gate 2). Submission deadline is one week prior to the meeting at noon.

## Home Loans

**Lena Shammel**

**360-920-4339**

Sudden Valley Resident  
for 20 Years



**Call or Email Today!**

- Fast, Free Pre-approvals
- Over 100 5-Star Zillow Reviews
- Zero-Down Options
- Debt Consolidation
- First-time Homebuyer Programs
- VA, USDA, FHA, Conventional, Jumbo
- New Construction and Renovation Loans

**EMAIL: LShammel  
@EvergreenHomeLoans.com  
NMLS# 1236038**



**Serving Northwest  
Washington Adventurists  
For Over 50 Years.**

*Since 1967 LFS Marine & Outdoor has served the Pacific Northwest community. Now, with several stores in Western Washington and Alaska, LFS maintains its roots in Whatcom County with our flagship store and corporate office at Squalicum Harbor in Bellingham. The secret to our 50+ year success story has been dependable and reliable service through the most challenging times. We understand that our customers rely on us to help them navigate a successful boating and outdoor experience. That is why we're here for you, and that is why we're here to stay.*



**851 Coho Way, Bellingham, WA  
360-734-3336 • 800-426-8860**

**[www.Go2marine.com](http://www.Go2marine.com)**

*"They have so much stuff!! Its a great place for any outdoors person or even DIY people. They have good prices too."*



- Google Review



# SVCA acronyms

- ACC - Architectural Control Committee
- AGM - Annual General Meeting
- BOD - Board of Directors
- BMP - Best Management Practices
- CC&Rs - Covenants, Conditions & Restrictions
- CIP - Capital Improvement Plan
- CRRRF - Capital Repair and Replacement Reserve Fund
- CTK - Christ the King Church
- DNR - Washington State Department of Natural Resources
- DOE - Washington State Department of Ecology
- DRC - Document Review Committee
- EIS - Emergency Information System
- FTE - Full Time Employees
- GIS - Geographic Information System
- GM - Sudden Valley's General Manager
- GMA - Growth Management Act
- HOA - Homeowner's Association
- LAMIRD - Limited Areas of More Intensive Rural Development
- LRPC - Long Range Planning Committee
- LWPG - Lake Whatcom Policy Group
- LWWS - Lake Whatcom Water & Sewer District
- MOU - Memorandum of Understanding
- MPR - Multi-Purpose Room
- N&E - Nominations and Elections
- NPDES - National Pollutant Discharge Elimination System
- OPS - Operations
- PSE - Puget Sound Energy
- PUD - Planned Unit Development
- RCW - Revised Code of Washington
- REC - Parks & Recreation Department
- RFP - Request for Proposals
- RFQ - Request for Qualifications
- ROW - Right-of-Way
- SGM - Special General Meeting
- SOP - Standard Operating Procedure
- SVCA - Sudden Valley Community Association
- UDR - Undesignated Reserves
- WCLS - Whatcom County Library System
- WCOG - Whatcom Council of Governments
- WCSO - Whatcom County Sheriff's Office
- WDFW - Washington State Department of Fish and Wildlife
- WTA - Whatcom Transportation Authority
- WUCIOA - RCW 64.90 - The WA Uniform Common Interest Ownership Act



## 2024 Summer Drawing Contest!



Enter to win a \$50 Tino's Gift Certificate!  
 Winners will be chosen from two age groups: 6 and under and 7 to 12.  
 Please return your drawings to the Welcome Center by end of day Friday, May 17th.  
 All art work will be displayed at the Rec Center and the winners will be selected by staff.

**Child's Name & Age:** \_\_\_\_\_  
**Address:** \_\_\_\_\_  
**Phone Number:** \_\_\_\_\_  
**Email:** \_\_\_\_\_



# Dental Care for the Whole Family

**Dentistry For All Ages**  
**Welcoming New Patients**  
**Robert Chaddock DDS**

**(360) 734-9928**

Most insurances accepted

[www.chaddockdentist.com](http://www.chaddockdentist.com)

Children deserve a wonderful dental experience. We encourage parents to bring their children in for a visit any time after the age of one.

Your child will love it here!

Dr. Chaddock is a western Washington native. He attended WWU and is a 2003 doctoral Graduate of the University of Washington School of Dentistry.



## MJD CONSTRUCTION

RESIDENTIAL AND COMMERCIAL  
 LIC #MJ0C0CL807BP

**SANTIAGO CORREA**  
**360-770-8117**

Sudden Valley Local!

- INTERIOR/EXTERIOR PAINTING
- LANDSCAPING | STONE
- TILE INSTALLATION
- DRYWALL/TAPING
- SIDING | FENCE | ROOFING

MJDCONSTRUCTION1@HOTMAIL.COM

## Keeping

Continued from 4

concerned me. The conversation seemed to be motivated by the actions of possibly one problem homeowner where parking had become an issue.

I sincerely hope that as the board of directors and general manager proceed with their research and exploration of regulation of short-term rentals that honest hardworking homeowners, such as myself, are invited to contribute to finding a common sense solution amenable to all.

A solution determined by facts and data, not the emotions of a few. A discussion that includes not only concerns, but also research into the community benefits of STR. Benefits such as:

- Local options for visiting family members (due to the absence of hotels in the area)
- Revenue for the local grocery, restaurants, and house cleaners
- Occupied homes vs potential vagrancies attracted by empty

### Many New Homes Under Construction - Contact Greg Paul For Details!

**Great Time to Consider a New Home!**

- High Energy Efficiency
- Heating & Cooling
- Soaring Ceilings
- New Appliances



#### GREG PAUL

- The Top Producer in Unit Sales in Sudden Valley
- Experienced Negotiation Skills
- Strong Online Presence
- Knowledgeable in the Amenities, Services, Regulations & Structure of Sudden Valley



**RE/MAX**  
 WHATCOM COUNTY, INC.

**360-739-7354**  
[www.DiscoverSuddenValley.com](http://www.DiscoverSuddenValley.com)

[GregPaul@Remax.net](mailto:GregPaul@Remax.net)



#### John Maurer, NMLS 487494

- Down payment grant up to 3% program
- USDA zero-down mortgages
- Renovation loans • New construction
- Sudden Valley resident
- 30+ years lending experience



MOVEMENTMORTGAGE

**(360) 223-9297**  
[John.Maurer@movement.com](mailto:John.Maurer@movement.com)



**FINANCIALS**

Sudden Valley Community Association

Sudden Valley Community Association  
 Operations - By Department  
 February 1, 2024 to February 29, 2024  
 CURRENT MONTH

Whole \$

UNAUDITED

Department

	Actual Revenue	Revenue B / (W)	Actual Salary Benefits	Salary & Benefits B / (W)	Actual Other Expense *	Other Exp B / (W)*	Net Income / (Loss) *	Net B / (W)*
ACC / Security	16,060	15,894	-	7,622	47,834	(21,579)	(31,774)	1,937
Accounting	1,864	(1,595)	26,064	1,456	2,391	118	(26,591)	(21)
Administration	161	38	36,041	2,761	8,895	(1,485)	(44,775)	1,314
Common Costs	3,778	520	-	-	27,958	(2,749)	(24,180)	(2,229)
Facilities	6,256	2,110	3,508	1,004	18,911	(3,032)	(16,163)	82
Maintenance	-	-	34,344	(1,897)	4,375	3,651	(38,719)	1,754
Subtotal	28,119	16,967	99,957	10,946	110,364	(25,076)	(182,202)	2,837
Golf	57,000	3,203	50,054	3,620	25,255	711	(18,309)	7,534
Marina	239	239	-	-	832	541	(593)	780
Rec/ Pools/ Parks	605	(168)	9,817	5,401	5,891	1,168	(15,103)	6,401
Subtotal	57,844	3,274	59,871	9,021	31,978	2,420	(34,005)	14,715
Subtotal Operations before Ops Dues	85,963	20,241	159,828	19,967	142,342	(22,656)	(216,207)	17,552
Ops Dues Earned	222,650	-	-	-	-	-	222,650	-
Curr Yr Bad Debts Activity	(8,190)	-	-	-	-	-	(8,190)	-
Net Ops Dues	214,460	3,177	-	-	-	-	214,460	3,177
Net Operations	300,423	23,418	159,828	19,967	142,342	(22,656)	(1,747)	20,729
Other Operating Activity								
UDR Activity	11,081				236		10,845	
AR Accrual - Prior Year Reversal	-				-		-	
AR Accrual - Current Year	-				1,948		(1,948)	
Vacation Liability Accrual	-				-		-	
Total Other Operating Activity	11,081				2,184		8,897	
Grand Total Operations Activity	311,504	23,418	159,828	19,967	144,526	(22,656)	7,150	20,729

\* Excludes Depreciation  
 B / (W) = Better / (Worse) Than Budget.

*SIGN UP FOR*

# Sudden Valley eBlasts

Receive weekly announcements, news,  
and alerts from SVCA via email.  
*Scan the code below to sign up!*

(You can unsubscribe at any time.)





**Edward Jones** > [edwardjones.com](http://edwardjones.com) | Member SIPC

## Compare our CD Rates


Bank-issued, FDIC-insured

3-month **5.35 %** APY\*

6-month **5.20 %** APY\*

1-year **5.10 %** APY\*

**Call or visit  
your local financial advisor today.**



**Rhea E Booth**  
 Financial Advisor

12 Bellwether Way  
 Suite 106  
 Bellingham, WA 98225  
 360-752-9193

\* Annual Percentage Yield (APY) effective 04/25/2024. CDs offered by Edward Jones are bank-issued and FDIC-insured up to \$250,000 (principal and interest accrued but not yet paid) per depositor, per insured depository institution, for each account ownership category. Please visit [www.fdic.gov](http://www.fdic.gov) or contact your financial advisor for additional information. Subject to availability and price change. CD values are subject to interest rate risk such that when interest rates rise, the prices of CDs can decrease. If CDs are sold prior to maturity, the investor can lose principal value. FDIC insurance does not cover losses in market value. Early withdrawal may not be permitted. Yields quoted are net of all commissions. CDs require the distribution of interest and do not allow interest to compound. CDs offered through Edward Jones are issued by banks and thrifts nationwide. All CDs sold by Edward Jones are registered with the Depository Trust Corp. (DTC).

FDI-1867N-A © 2024 EDWARD D. JONES & CO., L.P. ALL RIGHTS RESERVED. AECSPAD

**FINANCIALS**

**Sudden Valley Community Association  
Balance Sheet  
February 29, 2024 and December 31, 2023**

	Unaudited** Feb. 29, 2024	Unaudited** Dec. 31, 2023	Int. / (Dec)
<b>OPERATIONS</b>			
<b>Current Assets</b>			
Operating Cash	\$ 482,856	\$ 685,747	\$(202,891)
Building Completion Deposit Fund	481,920	511,445	(29,525)
Member Receivables - Operations*	-	43,985	(43,985)
Other Receivables	17,767	17,562	205
Prepaid Expenses	181,217	70,215	111,002
Operating Lease ROU Assets	3,927	5,023	(1,096)
Inventory	2,201	6,699	(4,498)
<b>Total Current Assets</b>	<b>1,174,888</b>	<b>1,339,636</b>	<b>(164,748)</b>
<b>Current Liabilities</b>			
Accounts Payable	(102,427)	(225,485)	123,058
Accrued Vacation Liability	(64,748)	(64,245)	503
Accrued Payroll	-	(64,114)	64,114
Prepaid Assessments	(868,832)	(730,966)	(137,866)
Building Completion Deposits	(481,920)	(511,445)	29,525
Other Refundable Deposits	(5,796)	(5,796)	-
Operating Lease Liability	(3,927)	(5,023)	1,096
Prepaid Golf Memberships	-	(112,089)	112,089
<b>Total Current Liabilities</b>	<b>(1,027,650)</b>	<b>(1,219,113)</b>	<b>191,463</b>
<b>Operating Reserve Funds</b>			
Emergency Operating Cash	462,520	362,252	268
Undesignated Reserves Cash	132,026	308,765	25,761
<b>Total Operating Reserve Funds</b>	<b>594,546</b>	<b>671,017</b>	<b>76,471</b>
<b>Net Operating Assets</b>	<b>\$ 441,784</b>	<b>\$ 789,540</b>	<b>\$ 347,756</b>
<b>CAPITAL</b>			
<b>Capital Current Assets</b>			
CRRF (Capital Repair & Replacement) Cash Fund	3,803,593	3,624,027	179,566
Roads Reserve Cash Fund	2,428,270	2,039,620	288,650
Board Dues Reduction Cash Fund	87,724	87,888	36
Mailbox Cash Fund	130,668	126,445	4,223
CRRF Capital Reserve Holding Cash	230,783	222,019	(8,764)
Mitigation Assignment of Savings Cash	49,711	49,868	(157)
LVMSO Assignment of Savings Cash	14,216	101,840	(86,924)
Member Receivables - Capital**	-	36,112	(36,112)
<b>Total Capital Current Assets</b>	<b>6,635,665</b>	<b>6,267,439</b>	<b>368,226</b>
<b>Capital Fixed Assets</b>			
Fixed Assets	15,326,547	15,391,586	(65,039)
Finance ROU Assets	123,492	136,464	(12,972)
Lots Held for Sale	228,043	228,041	2
<b>Total Capital Assets</b>	<b>15,680,085</b>	<b>15,756,091</b>	<b>(76,006)</b>
<b>Long Term Liabilities</b>			
CRRF Loan 2022	(1,758,456)	(1,799,425)	42,969
Finance Leases	(96,394)	(106,597)	10,213
<b>Total Long Term Liabilities</b>	<b>(1,854,850)</b>	<b>(1,906,022)</b>	<b>51,172</b>
<b>NET ASSETS</b>	<b>\$ 21,304,694</b>	<b>\$ 20,906,549</b>	<b>\$ 398,145</b>
<b>MEMBER EQUITY</b>			
<b>Member Equity</b>			
Current Year Net Income: Operations	153,745	434,153	(280,408)
Net Income: Rec. Special Assmt	-	(180,468)	180,468
Transfers Out from Operations to Capital	(105,600)	-	105,600
Current Year Net Income: Capital**	245,802	1,516,019	(1,270,217)
Transfers Into Capital from Operations	105,600	-	105,600
Retained Earnings**	5,203,806	4,950,122	253,684
Capital**	15,701,343	14,186,724	1,514,619
<b>TOTAL MEMBER EQUITY</b>	<b>\$ 21,304,694</b>	<b>\$ 20,906,549</b>	<b>\$ 398,145</b>

\* The Association's internal policy is to write off any member receivables that are 30 days past due as bad debts for internal financial statement purposes. As per SVCA policy, Management continues to pursue collection of these receivables via all avenues allowed by Washington State laws. In addition, the Association records and bills financial charges on receivables that are 90 days past due at 1% per month. At February 29, 2024, and December 31, 2023, the balances of receivables written off were \$703,755 and \$623,674, respectively.

\*\* Beginning with the 2020 year and audited financial statements, Accounting Standards Codification (ASC) 906 requires issued audited financial statements to reclassify unspent capital dues revenue, including related capital transfer fee collections, as a contract liability balance (unearned revenue), which is then reversed out in future years when capital dues/capital transfer fee collections are actually expended on capital related expenditures. The particular accounting standard change is only incorporated into the issued audited financial statements and is not factored into SVCA's internal monthly statements as it would obscure the reality of monthly capital dues/capital transfer fee revenues collected for internal monthly presentation purposes. See SVCA's 2020, 2021, and 2022 audited financial statements (2022 represents the most recently issued audited statements), which fully incorporate ASC 906 and comply with Generally Accepted Accounting Principles (GAAP).

**Sudden Valley Community Association  
Income Statement Summary**

UNAUDITED	Current Month - February 2024		Year to Date - 2 Months Ending 2/29/2024				
	Operations & Operating Reserves	Operations Better / (Worse) Budget	Capital Reserves**	Operations & Operating Reserves	Operations Better / (Worse) Budget	Coll %	Capital Reserves**
<b>REVENUE</b>							
Current Year Dues & Assessments Income							
Dues & Assessments Income	222,650	-	230,827	445,171	-	-	461,506
Bad Debt Reserve	(8,190)	-	(6,597)	(22,161)	-	-	(18,541)
<b>Net Current Year Assessment Income</b>	<b>214,460</b>	<b>3,177</b>	<b>224,230</b>	<b>423,010</b>	<b>443</b>	<b>95.0%</b>	<b>442,965</b>
Bad Debt Recoveries - Prior Years							
Golf Income	57,000	3,203	3,750	223,991	3,325	-	12,631
Marina Income	139	139	-	645	645	-	-
Rec Center & Pools Income	480	480	-	1,291	1,291	-	-
Legal & Collections Income	-	-	-	-	-	-	-
Other Income	17,783	10,869	-	31,298	17,500	-	-
Rental Income - Other	125	(647)	-	315	(615)	-	-
Area Z Rental Income	827	827	-	4,757	(1,003)	-	-
Lease Income	5,430	1,284	-	10,859	2,567	-	-
New Home Construction Fees	3,500	3,500	-	3,500	3,500	-	-
Capital Gain (Loss) on Sale of Assets	-	-	-	-	-	-	-
Investment Income	680	589	3,730	1,426	1,243	-	7,612
<b>Total Revenue</b>	<b>300,424</b>	<b>23,421</b>	<b>231,710</b>	<b>701,092</b>	<b>28,896</b>	-	<b>463,208</b>
<b>EXPENSES</b>							
Salaries & Benefits	159,828	19,967	-	244,681	34,895	-	-
Contracted & Professional Services	13,328	(5,024)	-	25,418	(7,054)	-	-
CC&Rs/ Mandates	36,667	535	-	77,381	(4,149)	-	-
Maintenance & Landscaping	20,678	11,019	-	37,417	38,435	-	-
Utilities	24,757	(4,574)	-	35,559	(3,853)	-	-
Administrative	10,541	(4,361)	-	25,659	(3,762)	-	-
Regulatory Compliance	21,684	(19,681)	-	50,806	(44,344)	-	-
Insurance Premiums	14,688	(457)	-	29,377	(913)	-	-
Other Expenses	-	84	-	-	167	-	-
Depreciation Expense	-	-	96,162	-	-	-	192,324
Interest expense	-	-	6,023	-	-	-	8,972
<b>Total Expenses</b>	<b>302,171</b>	<b>(2,692)</b>	<b>102,185</b>	<b>526,298</b>	<b>9,422</b>	-	<b>201,296</b>
<b>Net Income (Loss)</b>	<b>(1,747)</b>	<b>20,729</b>	<b>129,525</b>	<b>174,794</b>	<b>38,318</b>	-	<b>261,912</b>
<b>Other Activity</b>							
Net Other UDR Activity*	10,845	-	-	23,489	-	-	-
AR Accrual - Prior Year Reversal	-	-	-	(43,985)	-	-	(16,112)
AR Accrual - Current Year	-	-	-	-	-	-	-
Vacation Liability Accrual	(1,948)	-	-	(553)	-	-	-
<b>Total Other Activity</b>	<b>8,897</b>	<b>-</b>	<b>-</b>	<b>(21,049)</b>	<b>-</b>	<b>-</b>	<b>(16,112)</b>
<b>Grand Total Activity</b>	<b>7,150</b>	<b>20,729</b>	<b>129,525</b>	<b>153,745</b>	<b>38,318</b>	-	<b>245,800</b>

\*Prior year recoveries for operations are deposited into the Undesignated Reserve Account (UDR).

\*\*Refer to the last footnote on the Balance Sheet (prior page) for a discussion of Accounting Standards Codification (ASC) 906 and capital dues revenue collections.

**Are you without insurance?**  
Call to see if you qualify for a special enrollment.

**Group of Health Insurance Services, LLC**  
Your Local Health Insurance Consultants  
360-527-2334 • cmillerkw@gmail.com • www.hicllc.net

**Specializing in:**

- Group and Individual Medical Insurance
- Medicare Health Plans
- Washington Healthplanfinder Registered
- Dental • Vision



Christina Miller  
Licensed Agent

# Sudden Valley Golf Club

## 2024 Memberships Are On Sale Now!

**Sudden Valley Golf Club  
Golf Program Information**

**360-734-6435**  
or Toll Free 855-506-2219

[www.suddenvalleygolfcourse.com](http://www.suddenvalleygolfcourse.com)

**Full Member Privileges**

- Unlimited Golf • Unlimited Range Balls • Preferred Tee Times •
- Handicap Service • Locker Service • Golf Tournaments •
- Limited Reciprocal Privileges at Area Private Clubs •
- Golf Shop Discount • Social Events •

*No matter how often you play, there is a membership that is right for you!*

<b>Full Membership Rates</b>					
Property Owners	Annual	Monthly	Non-Property Owners	Annual	Monthly
Single	\$2,200	\$185	Single	\$2,400	\$200
Couple	\$3,300	\$275	Couple	\$3,650	\$305
Family of 3+	\$3,500	\$295	Family of 3+	\$3,850	\$325
Young Family (children 15 or younger)			Young Family (children 15 or younger)		
After Noon Play	\$1,550	\$130	After Noon Play	\$1,700	\$145
Senior Limited (62 & up, M-F)	\$1,600	\$135	Senior Limited (62 & up, M-F)	\$1,760	\$150
Intermediate (Ages 18 - 28)	\$1,100	\$95	Intermediate (Ages 18 - 28)	\$1,200	\$105
Junior (17 and Younger)	\$325	\$35	Junior (17 and Younger)	\$360	\$40

**Associate Membership:** Associate members receive three complimentary rounds of golf, 50% off all green fees, 50% off range balls, handicap service, a locker, preferred tee times, and may play in all Golf Club tournaments and participate in all social events. **Cost: \$525 / year - \$45 / mo.**

**Social Membership:** Social members receive two complimentary rounds of golf, 25% off all green fees, a locker, preferred tee times and may play in all Golf Club tournaments and participate in all social events. **Cost: \$135 / year (\$145 / year with GHIN Handicap Service)**

## Welcoming

Continued from 8

homes

- Well-maintained homes and grounds

I look forward to contributing to finding a fair solution for all that honors property rights. I am thankful for the board's attention to keeping our community both safe and welcoming.

*Kari Rinker  
Sudden Valley*

**No SVCA board emails in Views?**

*Editor,*

Please add SV emails for all SVCA board members to the Views.

As a decades-long SVCA member, and past N&E Chair, I understand how important it is for SVCA board members to hear from their constituents, in advance, about policies and agenda items.

I would like to see the layout adjusted to more prominently list the board members, with each board member's SV emails in a separate box with a larger font, including a note of welcome encouraging the property owners to email their comments on SVCA issues.

*Forest Cat  
Sudden Valley*

**SALES • SERVICE • INSTALLATION**

# BARRON

HEATING AIR CONDITIONING

**VISIT OUR WARM SHOWROOM**

**FURNACES • HEAT PUMPS • BOILERS  
RADIANT FLOOR HEATING  
AIR CONDITIONING • DUCT CLEANING  
WOOD, GAS & PELLET STOVES  
SPAS AND ACCESSORIES**

## 360-676-1131

**5100 Pacific Highway Ferndale, WA**



# CLASSIFIEDS

To place a classified ad, please email [mitze@lyndentribune.com](mailto:mitze@lyndentribune.com) or call (360) 354-4444.

Deadline: 23rd of each month  
Monthly Rates: \$15 per column inch

**LAWN MOWING & LANDSCAPING**  
Lawn Mowing, Hedge Trimming, Tree Trimming, Tree Removal/Limbing, Yard Cleanups, Hardscape Work, Excavation Work. Year-Round Maintenance Work!  
**CALL or TEXT 360-318-5426**

**Full Service Painting Interiors/Exteriors**  
[www.soundpaintingcompany.com](http://www.soundpaintingcompany.com)  
**360-778-3323**  
Cont. # SOUNDPC033DJ

**ELITE LANDSCAPE & MINI-EXCAVATION LLC**  
Landscape Clean Ups • Mowing • Pruning • Excavator Work Weeding • Landscape Installation • Tree Work • Mulch Gravel • Dirt • Dump Runs • Pressure Washing • More!  
**360-296-4824** \*ELITELM817BB  
[www.EliteLandscapeExcavation.com](http://www.EliteLandscapeExcavation.com)

**VACANT LOTS WANTED!**  
I continually have buyers looking for quality vacant lots in Sudden Valley. Contact me for a market evaluation.  
 **Greg Paul**  
360-739-7354  
[GregPaul@Remax.net](mailto:GregPaul@Remax.net)

**GOOD NEIGHBOR GARDENING**  
May = Plant Trees, Shrubs, Perennials! I Do- Planting; Pruning; Design/Redesign; Clean-Ups; Curb Appeal and Maintenance For Your Home, Second Home, Rental Check me out on FACEBOOK  
**Contact Terry 360-671-7369**

**PRESSURE WASHING & DUMP RUNS**  
Pressure Washing of Decks, Rock Work, Driveways, Roofs, Gutters, Sidewalks, Houses  
Dump Runs/Haul Away of Household & Yard Debris  
**Call now to set up an appointment!**  
**360-312-8409**

Please Recycle this Paper.

For more information go to [WWW.SUDDENVALLEY.COM](http://WWW.SUDDENVALLEY.COM)

**FINANCIALS**

Sudden Valley Community Association

Sudden Valley Community Association  
Operations - By Department  
January 1, 2024 to February 29, 2024  
YEAR TO DATE Whole \$

UNAUDITED Department	Actual Revenue	Revenue B / (W)	Actual Salary Benefits	Salary & Benefits B / (W)	Actual Other Expense *	Other Exp B / (W)*	Net Income / (Loss) *	Net B / (W)*
ACC / Security	21,660	21,327	-	11,575	108,954	(52,389)	(87,294)	(19,487)
Accounting	3,480	(3,437)	40,687	2,225	3,063	1,952	(40,270)	740
Administration	268	52	54,793	4,406	14,456	4,450	(68,981)	8,908
Common Costs	10,717	4,200	-	-	58,733	(8,313)	(48,016)	(4,113)
Facilities	15,616	1,564	5,393	1,637	28,876	3,495	(18,653)	6,696
Maintenance	-	-	53,106	(1,662)	7,196	13,410	(60,302)	11,748
<b>Subtotal</b>	<b>51,741</b>	<b>23,706</b>	<b>153,979</b>	<b>18,181</b>	<b>221,278</b>	<b>(37,395)</b>	<b>(323,516)</b>	<b>4,492</b>
Golf	223,991	3,325	75,877	7,852	49,913	8,368	98,201	19,545
Marina	745	745	-	-	1,436	1,025	(691)	1,770
Rec/ Pools/ Parks	1,606	676	14,825	8,862	8,991	2,530	(22,210)	12,068
<b>Subtotal</b>	<b>226,342</b>	<b>4,746</b>	<b>90,702</b>	<b>16,714</b>	<b>60,340</b>	<b>11,923</b>	<b>75,300</b>	<b>33,383</b>
<b>Subtotal Operations before Ops Dues</b>	<b>278,083</b>	<b>28,452</b>	<b>244,681</b>	<b>34,895</b>	<b>281,618</b>	<b>(25,472)</b>	<b>(248,216)</b>	<b>37,875</b>
Ops Dues Earned	445,171	-	-	-	-	-	445,171	-
Curr Yr Bad Debts Activity	(22,161)	-	-	-	-	-	(22,161)	-
<b>Net Ops Dues</b>	<b>423,010</b>	<b>443</b>	<b>-</b>	<b>-</b>	<b>-</b>	<b>-</b>	<b>423,010</b>	<b>443</b>
<b>Net Operations</b>	<b>701,093</b>	<b>28,895</b>	<b>244,681</b>	<b>34,895</b>	<b>281,618</b>	<b>(25,472)</b>	<b>174,794</b>	<b>38,318</b>
<b>Other Operating Activity</b>								
UDR Activity	24,112	-	-	-	623	-	23,489	-
AR Accrual - Prior Year Reversal	(43,985)	-	-	-	-	-	(43,985)	-
AR Accrual - Current Year	-	-	-	-	-	-	-	-
Vacation Liability Accrual	-	-	-	-	553	-	(553)	-
<b>Total Other Operating Activity</b>	<b>(19,873)</b>	<b>-</b>	<b>-</b>	<b>-</b>	<b>1,176</b>	<b>-</b>	<b>(21,049)</b>	<b>-</b>
<b>Grand Total Operations Activity</b>	<b>681,220</b>	<b>28,895</b>	<b>244,681</b>	<b>34,895</b>	<b>282,794</b>	<b>(25,472)</b>	<b>153,745</b>	<b>38,318</b>

\* Excludes Depreciation  
B / (W) = Better / (Worse) Than Budget

## Board: Creates safety committee

Continued from 1  
exceed amount of \$916,153.  
• On April 25, approved the allocation of \$13,108.22 from CRRRF and authorize the General Manager to execute SVCA's standard construction contract with Lynden Sheet Metal.  
• On April 25, approve moving the unspent \$22,868 previously obligated for capital project 9723.04 to the general CRRRF fund, effectively placing the Austin Creek Erosion Repair project in a monitoring status.  
• On April 25, approved the allocation of \$32,571.00 from CRRRF for the engineering and permitting work for the proposed Austin Creek repairs.

The SVCA board next meets on May 9 and May 23. -- Contact Bill Helm at [bill@lyndentribune.com](mailto:bill@lyndentribune.com).

**SIMPLE 1 SOLUTIONS LLC**   
CALL / TEXT US TODAY FOR FREE ESTIMATES:  
**(360) 261-4409**

**-LANDSCAPING      -YARD CLEANUPS**  
**-WINDOW CLEANING      -GUTTERS**  
**-PRESSURE WASHING      -JUNK HAULS**

**YEAR-ROUND SERVICES      Simple1now.com**

**LUKERATIVE**  
JUNK REMOVAL  
**360.812.0911**

"Rain, Snow or Shine We're on the Grind" [LukerativeJR@gmail.com](mailto:LukerativeJR@gmail.com)

**Skye Luke** Estate Sales, Move Outs, Garbage Collection, Property Clean Ups, Vehicle Removal  
Asset Advisor

**Sign Up Today!**

SUDDEN VALLEY COMMUNITY ASSOCIATION  
**360-734-6430**  
4 CLUBHOUSE CIRCLE BELLINGHAM, WA 98229  
[WWW.SUDDENVALLEY.COM](http://WWW.SUDDENVALLEY.COM)

# Using rat poison to control rodent infestations can have devastating effects on wildlife, family pets



Using rat poison to control rodent infestations can have devastating effects on other wildlife and family pets. (Photo courtesy Robin Robertson)

**By Taimi Van de Polder**  
SVCA Board Vice President

An infestation of mice and rats around your home is an undesirable situation, but turning to some types of rat poison to help control the problem can lead to another undesirable situation: dead and dying birds and other wildlife, as well as our beloved family pets.

Rat poisons, or rodenticides, can be used successfully to manage and control rodent infestations, but rodenticides that contain anticoagulants can have more far-reaching and unintended effects because of how these products are designed to work.

Anticoagulant rodenticides kill rats and mice by interfering with their blood-clotting ability, according to the National Park Service, when rodents consume rat poison, their blood-clotting ability begins to fail, and they slowly die from internal bleeding, or they become more susceptible to severe consequences and even death from minor injuries like cuts and bruises. It can take as long as 10 days for a rodent to die after consuming rodenticides.

During this time, they can experience nosebleeds and blood in

their urine and feces and also can develop mange.

They may even become an easier target for some predators as their health fails.

In the meantime, those rats and mice that have consumed the rodenticide can be eaten by predators in the ecosystem, animals like raptors and mammals such as coyotes, bobcats and foxes.

Even the carcasses of animals that have died from rat poison can be eaten by other animals looking for a meal.

This allows the rodenticide to move its way up the food chain, leading to secondary poisoning of other animals, the park service reports. Then animals with secondary poisoning can be eaten by still other prey, causing tertiary poisoning.

These unintended victims of rodenticides may be able to survive with small amounts of the anticoagulants in their systems, but it can build up to dangerous — and even deadly — levels as they consume more and more affected prey.

Please avoid using products with anticoagulants, and research other ways to deal with the problem, or call in a professional.

**SUDDEN VALLEY**  
*Pet of the*  
**MONTH**

Wasabi

This month's pet of the month is Wasabi, submitted by Allison Fina. This is our kitty cat, Wasabi. Named after the bright green eyes she once had as a kitten and now aptly reflects her spicy personality. She's a beautiful, 18 year old, toothless girl.

**Do you have a pet of the month?**

If you think that your pet is ready for prime time, please send a high resolution photo with your pet's name, your name, and a brief description to [office@suddenvalley.com](mailto:office@suddenvalley.com)

THE SUDDEN VALLEY *Pet of the MONTH* IS SPONSORED BY:

**Locally Owned Since 1993**  
1941 Lake Whatcom Blvd, Bellingham, 98229  
Delivery available! Order online or call:  
**(360) 389-5749**  
[www.petstopinfo.net](http://www.petstopinfo.net)  
Tues.-Sat. 11am-6:30pm, Closed Sun. & Mon.

## Register for CERT training in May in Sudden Valley

**Amy Cloud**  
Public Information Officer  
Division of Emergency Management  
Whatcom County Sheriff's Office

When disaster strikes, the first responder may be your neighbor, a nearby package deliverer, or even you. For communities such as Sudden Valley, self-contained and somewhat isolated, professional response could be delayed, especially if the disaster is widespread. Being trained to respond immediately, before that outside help arrives, can save lives.

Here in Whatcom County, as around the nation, trained community emergency response teams, better known as CERT, are those who have stepped up to learn how to respond to disasters

in support of emergency and first responders.

CERT Basic Training includes fire safety, team organization, light search-and-rescue, and disaster medical operations. Training will now be offered in Sudden Valley. The eight-week course begins Wednesday, May 8. Classes are three-hours one night per week (Wednesdays except for Tuesday, May 14) and will be in the Sudden Valley Dance Barn.

Registration now underway and limited to 30 students. Cost is \$50. To reserve your place, email [dbestle@co.whatcom.wa.us](mailto:dbestle@co.whatcom.wa.us). Please provide a phone number.

For more information, visit the CERT webpage on the Whatcom County website, [whatcomcounty.us](http://whatcomcounty.us).

1200 Lakeway Drive, Unit #2  
Bellingham, WA 98229  
**360-733-3700**  
[www.sunmarkproperties.com](http://www.sunmarkproperties.com)  
email: [sunmarkproperties@msn.com](mailto:sunmarkproperties@msn.com)

TRUST YOUR LOCAL SALES OFFICE!

**John Kelleher**  
Broker

**Jackie Ryan**  
Designated Broker

**Vadim Kotsyuba**  
Broker

**Azam Nader**  
Broker

## SUDDEN VALLEY VACANT LOTS

20 Sparrow Ct. (Gate 2).....\$109,000  
**Semiahmoo-** 5487 Wood Duck Lp (Bay View Lot).....\$325,000

**NEW/WTG**

**148 Polo Park Drive #A** Priced to sell! Great lot in Gate 13, ULID has been paid on lot 55. A lovely and private lot to build your next home, this could be the one! All Sudden valley amenities include golf course, marina, hiking trails, swimming pool, tennis courts, beaches, boat launch and 24/7 security. **\$14,900**

**VPC/EMR**  
**VE/VE**

Established hair studio location over 40 years available June 1st, 2024. Call for an appointment: 360-441-2900.

### SUDDEN VALLEY HOUSES & CONDOS Rental Listings

No smoking of any kind, no drugs. Applicants must have good credit. Call for application. Application fee - \$35 single, \$45 married.

**Far Summit Place Waterfront:** Fully Furnished. Great Whatcom lake-front home! Open floor plan w/ vaulted ceilings, hardwood & lots of skylights. Terraced decking, fire pit & sandy beach. Master suite w/ jetted tub & walk-in closet. Fireplace in living & family room area; eat-in kitchen & 2-car garage. Rent \$4200

**Cowgill Ave:** 4-bdrm 2 ba house located near I-5, Fairhaven and Happy Valley neighborhood, just like new! All brand new inside w/ large family rm, living rm, dining rm; fireplace, new laminate floors throughout, new doors + windows, new tub & shower plus new walk-in shower. Extra space for parking and carport. Rent \$2400

**2 Marigold Drive:** One bedroom loft condo right on Sudden Valley golf course. Rent \$1750

**Mt Baker Hwy:** Studio, ADU water and sewer is paid, available June 1st. Rent \$1200

**512 14th Street** Bellingham Bay view home in South Hill within walking distance to Taylor dock & Fairhaven. 3 bdrm, 2.5 ba, dining rm, sunrm w/all new windows, spacious living rm w/ new triple-wide sliding door overlooking the bay and islands. All new electrical, plumbing, kitchen, flooring, roof, siding, trim, decks, insulation + add'l 1.5 ba. Updated 2-car tandem garage is insulated and incl. a new floor, garage door, laundry rm, and a new bathroom w/all tile walk-in shower. Fully finished guest rm or art studio in the backyard. **\$1,650,000**

Build your dream home on this fabulous million dollar view home overlooking Drayton Harbor, while also enjoying the views of Semiahmoo Resort, White Rock, B.C., and coastal mountains. This lot, located in a gated community, has an unobstructed water view and abuts a community nature trail. Includes tree survey map. Just minutes from the US/Canadian Border. Priced to sell. **\$357,500**

Are you looking for Stress-free Property Management?  
Let us handle your rental with our 38 years of experience!