

Long Range Planning Committee

The Pavilion

The Community Center

Direction from Board of Directors

- On Feb 13, 2025
- The Board of Directors directed the Long Range Planning Committee to determine
- Options for Barn 8 & Barn 6
- We presented a 2 story barn with multi-purpose area, restrooms ,showers,family
- Restroom, kitchen, adult center, the commons 1,500 sq ft area for gatherings
- Estimated conceptual design cost was \$8,403,000
- This is no longer in the plan

Previous Proposals for Community Building

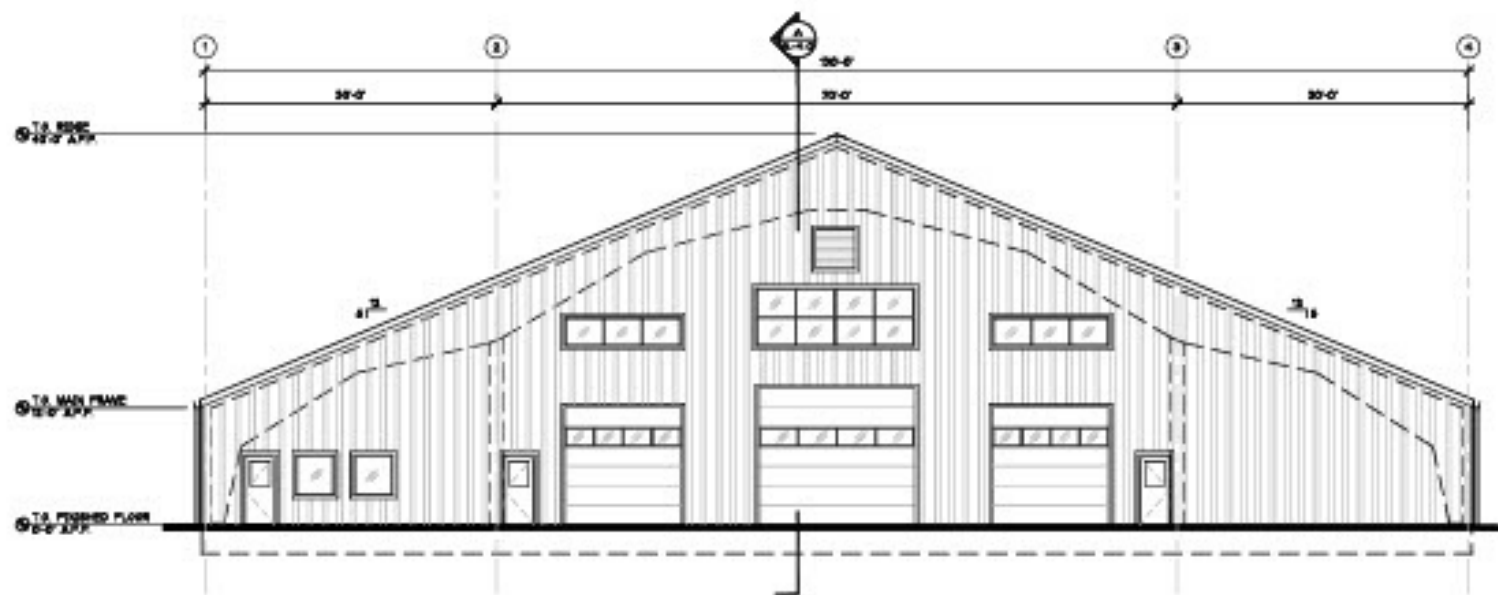
- 2017 was a Revitalization Proposal for 5 Million
- Failed narrow margin
- **2023 was a proposal for and enclosed gym for 2.1 mil**
- Failed
- 2023 was open air pavilion 1.1 mil to preserve the footprint
- Passed *advisory* vote but nothing was done

Needs of Community

- Population 7,776 per google 1,400 65 + 1,500 children
- Adult Center
- Multi-purpose rec area
- Kitchen
- Meeting Rooms

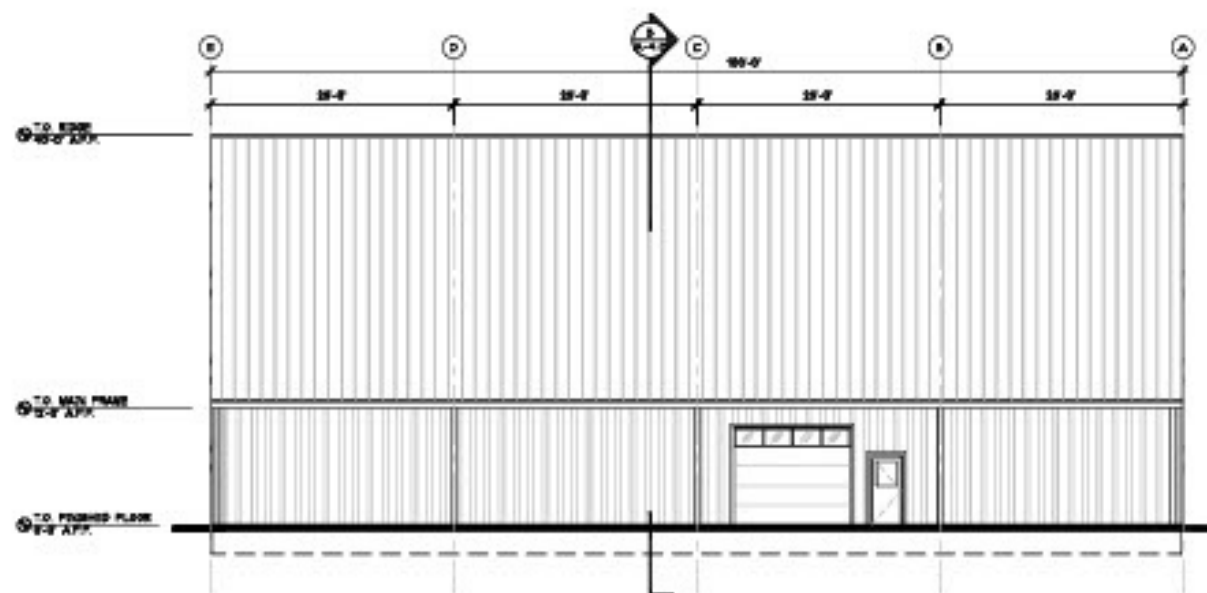
BARN 8

- We have had extensive reports on this structure
- To upgrade to current load, seismic and wind resistance
- The estimates are at \$3,788,355.04
- **With some additional unknown issues**
- So we don't lose use during construction we will start with barn 6 construction first



WEST ELEVATION

SCALE: 1/8"=1'-0"



SOUTH ELEVATION

SCALE: 1/8"=1'-0"

THE PAVILLION (Barn 6 site)

- Build new enclosed metal building up to code
- One level Multi-Purpose rec area
- Restrooms, family restroom, showers
- Office for rec with storage for equipment
- 1-2 meeting rooms
- Kitchen
- Roll up doors

The Pavilion Design Cost

- Estimated Cost \$3,073,638
- In 2022 the cost was \$2,173,976
 - To replicate the 2022 design would cost \$2,933,638
 - The additional cost of \$215,000 includes
 - Family Bathroom, Showers, 1-2 meeting rooms, Kitchen
 - Generator 65 kW option \$75,000

Time Line of Construction

Start May 2026

8 month Build

Simultaneously design and permit The Community Center
(on Barn 8 site)

Q & A

Thank You For Attending
Building Community